

DIPTFORD AND NORTH HUISH

PARISH NEWS

AUGUST 2024 **No. 643**

If you know anyone who would like to receive the Parish News – contact
Val Haddy 01548 821418 or email valjohnhaddy@aol.com

There are many new residents within Diptford Parish – who are all welcome to join the mailing list
for the Parish News – find out what is going on in the village and come and
join in this vibrant community

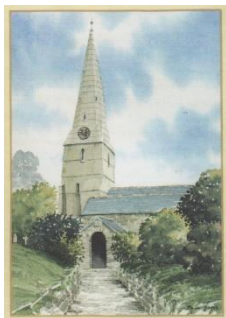
EDITOR'S NOTE

We apologise for the lack of a Church Rota for August in this Parish News. The
information has not yet been provided.

Information can be found on the Mission Community website

www.3rivers.org.uk or at www.achurchnearyou.com/8942





DIPTFORD CHURCH CLEANING

Would you like to keep our lovely Church sparkly?

You will be very welcome to come along to

St Mary's Church, Diptford

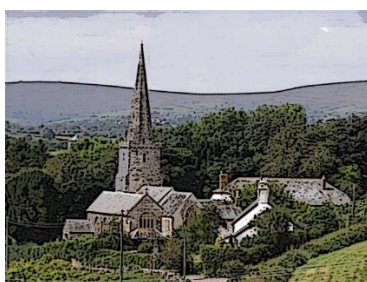
Saturdays 3 August and 7 September

From 9.30 am til 11 am

Steve Partridge is now organising our cleaning sessions

partridge.steve@btinternet.com

NORTH HUISH COMMUNITY GROUP



This group was set up in 2023 with the purpose of organising community events for the residents of North Huish and surrounding villages. The venue is St Mary's Church, North Huish, now closed for regular public worship but kept open to the public, providing a meeting space for the local community. This beautiful Grade 1 listed building is in the care of the Churches Conservation Trust, a national charity protecting historic churches at risk. Funds donated at events held there, help to support the cost of repair and maintenance which, in a typical year, can amount to nearly £2,000. Currently, there is a power supply but no electric circuit installed so, this year, a proportion of the funds raised are to be set aside to pay for the installation of electric sockets where they are most needed for safety and convenience when running events.

- Saturday 21st September: **Harvest Lunch, 12.00 – 2.00pm.** Homemade soup and bread + dessert + cider or apple juice.
- Monday 11th November: **Armistice Day short Act of Remembrance, 10.50** in support of the Royal British legion. Coffee and biscuits served.
- Sunday 8th December: **Carols by Candlelight, 4.00pm.** Mulled wine and mince pies served.

The North Huish Community Group look forward to welcoming you at any of these events.

**Diptford
Community Fund
Programme**



Grants up to £2000 are available to community groups in Diptford to tackle deprivation and make a positive difference to the lives of local disadvantaged people.

Funding themes include:

- training & work opportunities
- access to services in rural areas
- enable disabled people
- assist families in need
- bring people together
- Promote access to arts, culture & nature

For more information and to apply for a grant, call 01884 235887 or go to <http://devoncf.com/apply/community-benefit-funds/>

Diptford Parish Council Notes on July Meeting

Easy Fundraising has now been set up to help with fundraising for the Amenity Trust. This is a registered charity number **Registered Charity Number 276979**

If you are purchasing anything online sign into the Easy Fundraising website and then go to the website for the company, you wish to purchase from. It means that the Amenity Trust get a donation, but it does not cost you anything. This means we get a monetary donation every time you shop which can be for groceries delivered from all the big retailers or a one-off purchase from others.

Currently we have 14 members using the Easy Fundraising Website and as clerk I personally have raised a donation total of £36.21, it is really easy to do. If anyone needs help please contact me.

We can also accept one off donation direct to the Amenity Trust to help us with the fundraising for new play equipment. Any donations will be gratefully received and can be paid into the following bank account.

Account Name: Diptford Amenity Trust

Sort Code: 30-98-69

Account Number: 00196602

Defibrillator Training – More information will be given when we have available dates

Playpark update – The **activity frame** is now repaired now that the better weather is upon us. **Repairs to the slide** are now being looked into.

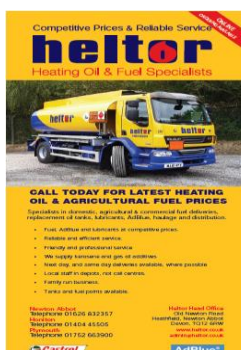
Councillors David Hancock and Guy Pannell (SHDC)

To read the District Councillor's Report, please see the following:

See appendix 2 <https://www.diptfordparishcouncil.org/meetings.php>

Ali Kohler Diptford Parish Clerk

DIPTFORD AREA OIL CO-OPERATIVE



Heltor in Newton Abbot are now our supplier of choice for the Oil Co-Operative and are proving to be reliable and better matching the original brief we had with Watsons. They are prepared to support the group need for regular top up or fixed amount deliveries at competitive pricing. Basically the arrangement we originally had with Watsons.

Also to support sporadic urgent requests that sometimes arise with group members, without ridiculous spot charges/prices.

Please see flyer attached or website www.heltor.co.uk for more details.

I am monitoring and agree prices, as previously, to ensure we retain the lowest possible pricing.

If you are interested in joining the Diptford Oil Co-Operative
please contact Steve Hill on 01548 821272 or email mr.sjhill@yahoo.co.uk

READERS' LETTERS

A new addition to the Parish News when space permits

Please note that views expressed in published letters are not necessarily endorsed by the Editorial Team

DRIVING ME MAD from Robert C Worms

Everyone who is a Diptford resident must have noticed the significant increase in traffic going through the village. As a shortcut to avoid Totnes the lanes are becoming increasingly congested particularly during the early morning and early evening. This would not be so bad if the drivers using these narrow lanes showed consideration for the residents, by not throwing litter all over on the verges and keeping to reasonable speeds.

I am getting tired of impatient drivers, unwilling to reverse when they are in fact obliged to, driving just inches away from my back bumper, hooting, flashing, pressuring me to go faster, dangerously so! And, often forcing me into the hedgerows when oncoming so that their progress is unimpeded.

Also critically important, the unacceptable risk pedestrians and horses are facing in just going about their daily routine, with non-resident vans and cars using the village as a short-cut at unacceptable speeds. The aggressive nature often shown by drivers not from the village is quite appalling and as a community we should not accept it!

The speed limit throughout the village should be 20-mph, including all the approach roads, which are all narrow and full of bends. It should be clearly stated on road signs that all Diptford roads are unsuitable for mobile homes, caravans, and lorries. The speed limit should be strictly enforced, either by road humps or preferably by cameras. I see Ashburton, with considerably better roads than Diptford, has a 20-mph speed limit. Why are large parts of our village 30-mph and the approach roads an incredible 60-mph? Surely the safety of our residents should be paramount.

Please join me in writing to the Parish Council to bring in a 20-mph speed limit throughout the whole village, with the associated measures to enforce it.

SPEED IN THE VILLAGE AND SURROUNDING AREAS

Your Parish Council is aware of an apparent increase in speeding drivers in the village and surrounding areas, together with an increase in inconsiderate behaviour including an increase in wanton littering. All are unacceptable and a danger to us all.

Over the years, the Parish Council has repeatedly tried to address the situation, with the Police carrying out spot speed checks etc. We have repeatedly asked for the 20 mph speed limit to be extended as far as Diptford Downs Farm from its present extent, so far with no success. It has always been the Council's intention to try again to get this limit extended when (if ever) the intended new houses are built opposite Wheat Park. I have contacted PCSO Russ Broadhurst to ask if we could have spot speed checks carried out again.

Suggestions have been made for the installation of road humps or rumble strips but, apparently as the village is within the Natural Landscape area (previously AONB), there has been resistance to this.

This year, with all the rain we have had (bit different to last year!), the annual growth of vegetation on the roadside hedges is now making walking, horse riding and driving even more hazardous. Alas there are many drivers and cyclists who seem unaware of the dangers we all face. Most local residents know where the hedges are soft and when they hide rocks and walls.

If there are issues of road safety or visibility, hedges CAN be cut out of the normal cutting season (September to March) and I am sure that the whole village would appreciate if residents could do this.

Additionally, inconsiderate parking in parts of the village leads to drivers taking 'the wrong line' from School up towards Christone Cross / Moreleigh creating even more 'near misses' on the crossroads. The Police and County will not take action on non recorded scrapes or near misses, so each and every occasion should be reported to them!

There is already a blanket 7.5 ton weight restriction on traffic through the village, except for access. This is regularly flouted as we all know.

Could / should the Parish Council look into solar powered speed signs? They seem to work in other locations. Another possibility is widespread display of signs like '20s Plenty – please drive responsibly' – these can be sourced for as little as under £2 each for numbers. Could we display these widely throughout the village to make an impact? Let your Parish Council know what you think.

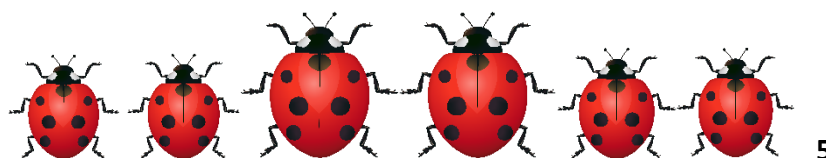
Driving generally appears to have become more impatient, especially since Covid, with an increase in aggressive behaviours experienced by many of us. Cars have increased in size too and the advent of satnav has taken traffic onto quite unsuitable routes.

Drive with due care for our village, residents and other road users!

Sue Franklin



THE RETURN OF THE FAMOUS
DIPTFORD JIGSAW FESTIVAL
 AUGUST BANK HOLIDAY 2024
AT ST. MARY THE VIRGIN CHURCH
Tea Coffee Cakes
And, Of Course Hundreds of Jigsaws
DIPTFORD August
24 - 25 - 26th
2pm to 5pm



LADYBIRDS EVENTS FOR AUGUST AND SEPTEMBER

ALL WELCOME – VISITORS £5

12 August 2.30pm Cream Tea in the Hall

9 September 7pm Needle Felting with Kath

FRIENDS OF DIPTFORD SCHOOL



and we funded:

- £6000 for outdoor learning
- £2000 for IPADs
- Trips and events (Aquarium, Stover Country Park, Tamar Bridge) £500
- £400 class books
- £400 for class enrichment
- £200 for new PE kit
- £100 for a new slide for EYFS
- £350 Drumming workshop
- Book bags for our new Reception intake in Sept 2024
- Improvements to the library space and shared areas £200
- Year 6 leavers books

St Mary's Church Diptford

are keen to hear from members of the community who may be able to support the work of the Diptford with North Huish Parochial Church Council.

They are looking for a **Secretary** to undertake duties linked to meetings and a **Landscaper/Gardener** to help with the cutting of the paths in the Churchyard.

If you are a member of the community and interested in supporting either of these roles, please contact:

Rev. David Sayle on 01548 821199 for further details.

TOTNES TV & ELECTRICAL

Established 1992
 APPLIANCE REPAIRS . AERIAL INSTALLATION
 ELECTRICAL CONTRACTING . PART 'P'
 REGISTERED
 TESTING & INSPECTIONS . CERTIFICATION .
 P.A.T. TESTING

ANDY GARNER / CHRIS HATCH

103d High Street, Totnes Devon TQ9 5SN
 Domestic Installer

Tel: (01803) 867298 **EIC NIC**

hmad architects



Building Excellence
AWARDS 2023

Regional Winner



- Experienced, friendly and local RIBA chartered architectural practice based in Mid Devon, working across the South West.
- Specialising in the adaptation of listed buildings, residential extensions, renovations and low energy design new builds.
- Call Luke McAdam for a chat about your project and how we might be able to help:

PROUDLY PROVIDED ARCHITECTURAL SERVICES TO THE CHURCH OF THE BLESSED VIRGIN MARY, RATTERY

01392 459777 – MAIL@HMAD.CO.UK
 WWW.HMAD.CO.UK

Ian Kirton Plumbing & Heating



077100 94424 01548 821 847

inkirton@btinternet.com

OFTEC registered
 for service and installation of oil appliances
 General plumbing, heating systems and
 bathrooms
 Any plumbing jobs considered

SOCIAL MEDIA IN THE VILLAGE

We have our Village Website

www.diptfordvillage.co.uk

Parish Council website

www.diptfordparishcouncil.org

Facebook Diptford Sustainable
 Community

WhatsApp Diptford Support
 Network

COMMUNITY INFORMATION

DIPTFORD PARISH HALL

BOOKING ARRANGEMENTS
 TO MAKE A BOOKING FOR
 DIPTFORD PARISH HALL

contact

DiptfordPH@yahoo.com or via the
[village website](http://www.diptfordvillage.co.uk)

www.diptfordvillage.co.uk

Chair of Trustees

Diptford Parish Hall. DiptfordPH@yahoo.com 07944
 098174

COMMUNITY NOTICEBOARD

THE NOTICE BOARD IN THE
 SQUARE IS FOR COMMUNITY

NOTICES ONLY

NO COMMERCIAL ADVERTISING WILL BE
 ALLOWED

WE WOULD ASK ALL ORGANISATIONS
 NOT TO 'HOG' THE SPACE AVAILABLE
 This additional facility has been installed by
 Diptford Parish Council
 with funding from our County and District
 Councillors

There is a combination lock – details of which
 have been given to voluntary organisations
 within the village

Business adverts as in Page 7 will be considered by the Editorial Team and are charged at £50 per advert – for 12 issues of the Parish News

Diptford Parish Lands Eleemosynary Charity

An independent charity

Do you know that there are funds available for people living in the parish of Diptford to access in times of need?

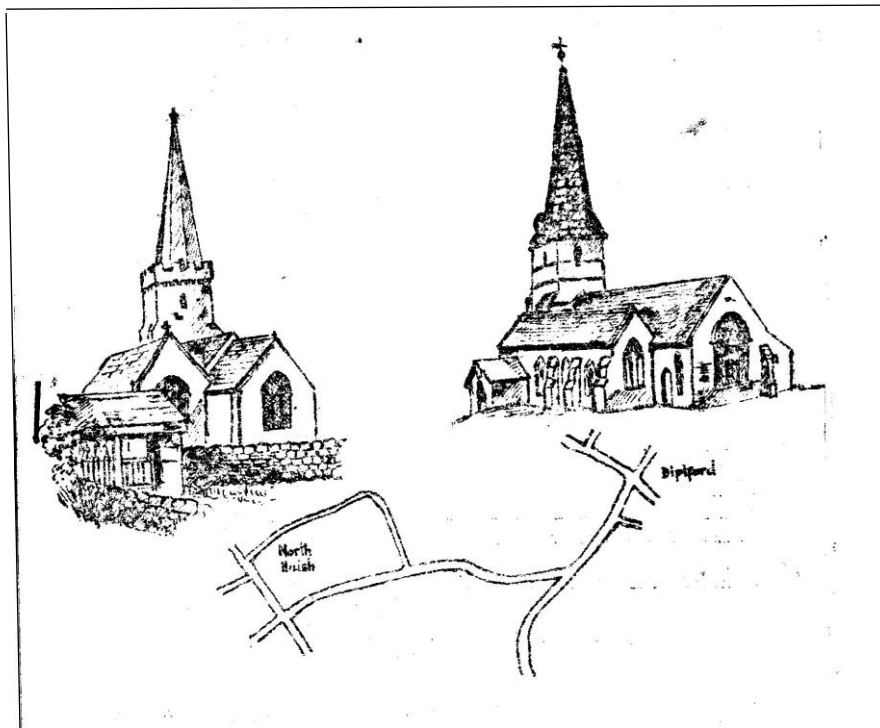
Confidentiality Guaranteed

Contact: Reverend David Sayle at parish_sayle@me.com

HIGHWAYS CONTACTS

To report any Highways problem, either report direct on Devon County Council website – devon.gov.uk (Report a Problem) or telephone the Call centre on 0345 155 1004

This applies to faulty streetlights, potholes and problems of visibility though landowners are encouraged to keep road signs on their land clearly visible and to cut roadside hedges on an annual basis out of the nesting season. There are exemptions from the timing if there are road safety issues.



Editor : Mrs Val Haddy, School House, Diptford Tel: 01548 821418

**PLEASE NOTE THAT all copy MUST be received before
the 25th of the preceding month**

Contributions may be submitted by e-mail to valjohnhaddy@aol.com

Contributions subject to change due to availability of space

Diptford & North Huish Parish News is published monthly by Diptford Parochial Church Council. Every care is taken in compiling the Parish News and no responsibility can be taken for any action arising from information given therein. All information is believed to be correct at the time of publication.