

DIPTFORD AND NORTH HUISSH

PARISH NEWS

DECEMBER 2024 **No. 647**

If you know anyone who would like to receive the Parish News – contact Val Haddy 01548 821418 or email valjohnhaddy@aol.com

There are many new residents within Diptford Parish – who are all welcome to join the mailing list for the Parish News – find out what is going on in the village and come and join in this vibrant community

DIPTFORD CHURCH SERVICES IN DECEMBER



St Mary's Diptford with North Huish Christmas Services

| | | | |
|----------------------|---------------|---------|----------------------|
| Sunday | 1st December | 4.30pm | Christingle Service |
| Sunday | 22nd December | 6.00pm | Carol Service |
| Christmas Eve | | 7.00pm | Carols in The Square |
| Christmas Day | | 11.00am | Christmas Communion |

A peaceful and Christ filled Christmas to you all

Three Rivers Mission Community
www.3rivers.org.uk



Further information can be found on the Mission Community website
www.3rivers.org.uk or at www.achurchnearyou.com/8942

Diptford Parish Council Ali Kohler, Parish Clerk
clerk@diptfordparishcouncil.org

Diptford Parish Council Notes on November Meeting

Easy Fundraising has now been set up to help with fundraising for the Amenity Trust. This is a registered charity number **Registered Charity Number 276979**

Easy Fundraising has now been set up to help with fundraising for the Amenity Trust.

If you are purchasing anything online sign into the Easy Fundraising website and then go to the website for the company, you wish to purchase from. It means that the Amenity Trust get a donation, but it does not cost you anything. This means we get a monetary donation every time you shop which can be for groceries delivered from all the big retailers or a one-off purchase from others.

Currently we have 17 members using the Easy Fundraising Website, to date we have raised over £270.00. If anyone needs help, please contact me.

We can also accept one off donation direct to the Amenity Trust to help us with the fundraising for new play equipment. Any donations will be gratefully received and can be paid into the following bank account.

We are now able to accept gift aid donations from taxpayers, which will increase donations from taxpayers at no cost to the donor.

Account Name: Diptford Amenity Trust

Sort Code: 30-98-69

Account Number: 00196602

Important – Please note

The Parish Council Councillors now have dedicated email addresses and if you wish to contact any of the Councillors directly, please use the email addresses listed below or alternatively contact the Parish Clerk on clerk@diptfordparishcouncil.org

Cllr S Franklin (Chair) – sue.franklin@diptfordparishcouncil.org

Cllr S Parker-Davidson (Vice Chair) – steven.parker.davidson@diptfordparishcouncil.org

Cllr S Hill – steve.hill@diptfordparishcouncil.org

Cllr C Peach – chris.peach@diptfordparishcouncil.org

Cllr T Crocker – trevor.crocker@diptfordparishcouncil.org

Cllr L Lethbridge – louise.lethbridge@diptfordparishcouncil.org

Cllr L Carrol – lucy.carrol@diptfordparishcouncil.org

The council would like to **welcome Cllr Gavin Paterson** to the Parish Council. His contact details will be circulated soon and if anyone wishes to contact him regarding council business, please contact the clerk in the first instance.

Defibrillator Training – The training on the 7th of November was a great success and 20 people attended. A big heartfelt thanks to the Air Ambulance staff who provided the training.

Defibrillator for Gara Bridge area – expressions have been made that residents would like to have a defibrillator in the Gara Bridge area. We are looking into costing, etc for this now.

Amenity Trust/Playing Field - A generous donation of £15,000 has been received by the Amenity Trust, but we still need a bit more to be able to complete the refurbishment of the playing field,

Graveyard – Three hundred graves have been mapped and it is hoped to have them all mapped by the end of December. If anyone has problems accessing any grave, please contact the church in the first instance.

Glebeland – Councillors met with a representative from Savills, and we are now awaiting Savills to contact us further.

A grant of £100 was agreed to the CAB.

Broadband – It has been brought to the attention of the Parish Council that the plans to bring broadband to the parish may not go ahead as originally planned, due to the proposed contractor Airband scaling back its plans. This will be discussed in detail at the December parish council meeting.

Councillor Dan Thomas (DCC) To read the District Councillor’s Report, please see the following:

See appendix 1 <https://www.diptfordparishcouncil.org/meetings.php>

Councillors David Hancock and Guy Pannell (SHDC) To read the District Councillor’s Report, please see the following: See appendix 2 <https://www.diptfordparishcouncil.org/meetings.php>

Ali Kohler Diptford Parish Clerk

Parishioners are welcome to attend Parish Council Meetings and have the opportunity to raise matters of concern by either attend the open forum at the start of meetings or by asking a Councillor to represent them. Parishioners are asked to limit their input to 4 minutes in order to permit the meeting to progress without undue delay, and may only speak during the open forum.

DIPTFORD QUIZ 2024

Once again, we held the annual Diptford quiz in November. It was a tremendous success; seven very capable teams took part in an exciting contest. Unfortunately, the “Young Ones” could not be with us thus, dramatically increasing the average age of the competitors.

I thought the quizmaster was excellent, especially having to deal with a merciless stream of heckling. Every question was either fair, if answerable, and apparently grossly unfair if not. Any wrong answer seemingly deserved half-a-point for being close, even true, or false questions, a 100% wrong answer apparently merited a half a point for being “almost” or “nearly” right!

A wonderful evening with a wonderful atmosphere and a final leader board, which was very close indeed, as follows:

| Team | Points |
|---------------------------------|--------|
| Back Hill Buccaneers | 117 |
| Diptford MC | 115 |
| 50% | 112 |
| Book Club (Defending Champions) | 105 |
| Top Marx | 100 ½ |
| M&Ms | 97 ½ |
| Let’s Get Quizzical | 92 |

Congratulations to the winning team and to all who took part. A big thank you to all contestants who together raised £ 151 for the mince pies and mulled wine at the forthcoming Christmas Eve carols.



Ham

Ham was Diptford short Mat bowls.

He was a founder member over 27 years ago along with Chris Temple.

Ham arranged training sessions for members to learn the basics and then friendly games with other newly formed clubs. We became quite a thriving club, so Ham looked into us entering the Southhams League which we have been part of now for many years.

Ham also decided that it was good for our members to take part in County events, so on numerous occasions, Ham would enter the single, pairs, triple and fours.

Along with other members, he became well known and one time an umpire who was also a scout said that he should be playing for County as he was such a good player.

Ham was known for his cap and would position it..... then, with his slow concentrated walk and shuffle of his feet, keeping his focus to assess the strike! You had to smile. His cap was his trade mark.

He was a great sportsman, encouraging new members, welcoming and friendly with a good sense of humour and a very caring nature.

His love of white Tigers led us to present him with a framed picture for his 70th.

Ham thank you from all present and past members for giving your time so generously for our club here in Diptford. We will miss you so very much.

Just one final message Ham - we did it - we got through the first round of the KO for first time.

This one was for you!!

Ham

There cannot be many people in the community who did not know Ham in one guise or another.

He was an integral part of the village for so long, a bellringer, a wonderful artist, a keen observer of nature and a member of the Hall Committee, as well of course as being the kingpin of the Short Mat Bowls Club in the village. He instigated the Village Quiz with the idea of it funding the refreshments around the Christmas Tree in the village. He would have been pleased that this mantle has been taken on and will continue. He and David Perkins were instrumental in conceiving and building our flowerbed in the Square, and cared for it with Pat for many years. He planted many native flowers and bulbs around the entrances to the village, one of many testaments to his enthusiasm and love of all things natural.

For many years, he contributed a Nature column to the Parish News and now, we can at last, reveal that he was 'Zepherus', the author of the Gardening page, a closely guarded secret all the time he was writing.

Most of all, he was a wonderful husband to Pat, and a true family man.

Thank you Ham for being you.

THANK YOU.

Ham Sampford's family would like to thank everyone for your kind messages and cards and for those who managed to come to his funeral. This has made it all a little bit easier for us , although I am sure that he would have been very surprised by it all.

Thank you too for your very generous donations , which will be divided between Devon Air Ambulance, { his favourite charity}, and St. Lukes who looked after him so well over the last few days of his life.

What kind and thoughtful friends and village we have.

Thank you again from Pat and Family

REST IN PEACE

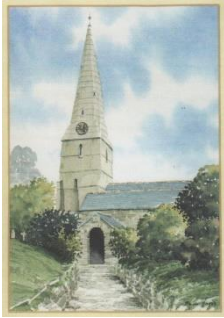
HAMILTON ANDREW DOUGLAS RICHARD SAMPFORD (Ham)

Ham died peacefully on 20 October 2024

The Funeral Service, conducted By Rev David Sayle, took place at St Mary's Diptford

On 7 November 2024

May Ham Rest in Peace



DIPTFORD CHURCH CLEANING

Would you like to keep our lovely Church sparkly?

You will be very welcome to come along to

St Mary's Church, Diptford

Saturday 7 December

From 9.30 am til 11 am

Steve Partridge is now organising our cleaning sessions

partridge.steve@btinternet.com

NORTH HUISH COMMUNITY GROUP



This group was set up in 2023 with the purpose of organising community events for the residents of North Huish and surrounding villages. The venue is St Mary's Church, North Huish, now closed for regular public worship but kept open to the public, providing a meeting space for the local community. This beautiful Grade 1 listed building is in the care of the Churches Conservation Trust, a national charity protecting historic churches at risk. Funds donated at events held there, help to support the cost of repair and maintenance which, in a typical year, can amount to nearly £2,000. Currently, there is a power supply but no electric circuit installed so, this year, a proportion of the funds raised are to be set aside to pay for the installation of electric sockets where they are most needed for safety and convenience when running events.

Sunday 8th December: **Carols by Candlelight, 4.00pm.** Mulled wine and mince pies served. The North Huish Community Group look forward to welcoming you at any of these events.



LADYBIRDS ADVENT FAYRE

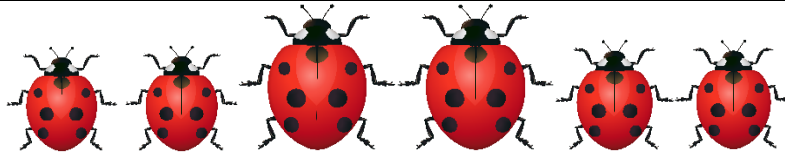
RAISES £ 800 FOR DIPTFORD AMENITY TRUST

The Parish Hall was alive and buzzing last Saturday, with the annual Diptford Advent Fayre, arranged by the Diptford Ladybirds.

Many, many thanks to all who helped, donated raffle prizes, tombola prizes and fabulous cakes. And a huge thank you to all the villagers who turned out, in atrocious weather, to support the event and spend so generously.

As a result, £ 800 has been raised for the Diptford Amenity Trust, which will, no doubt, be very gratefully received. It is always excellent when the village can support each other's activities for the benefit of the community as a whole.

If you would like to more information on Ladybirds, please contact Juli on 07947474983
Merry Christmas Everyone



Diptford Ladybirds Advent Fair

A big thank you to everyone who came and supported our Advent Fair on such an awful day during Storm Bert.

It seemed to be enjoyed by everyone and there were lots of smiley faces as people met and chatted to friends and neighbours.

The cake weighed in at 7lbs 1oz and was won by Esme Pollock.

The total profit was just over £784, which will go towards the Amenity Trust for the playing field. We are hoping to do another village fundraiser in early spring to up the total. So watch this space !!!!

Thank you again for all your support.

Pat

REST IN PEACE

David Gwilym Reed

1943 - 2024

of High House, Diptford

The Funeral Service took place at St Mary's Church Diptford
on Friday 8th November 2024

The Service was conducted by Rev David Sayle
May David Rest in Peace

FRIENDS OF DIPTFORD SCHOOL

We are running a refresh of our successful 100 Ball lottery - bigger cash prizes! If you would like to join up for 2025, please contact Lucy Carroll Chair of FODS !

Its a brilliant way of supporting School, and for about £1 a week you can have a chance to win every term.

Fundraising is really challenging, we are a very small school and we need this kind of regular support!



JOIN THE FRIENDS OF DIPTFORD SCHOOL 100 CLUB
RAISING FUNDS FOR THE CHILDREN
FOR AS LITTLE AS £1 A WEEK YOU CAN
BE IN WITH THE THE CHANCE TO WIN TERMLY CASH PRIZES
IF 100 BALLS ARE IN PLAY 1ST PRIZE £500, 2ND PRIZE £200, 3RD PRIZE £100 EACH TERM

HOW IT WORKS

- ✓ Pay £5 monthly by direct debit for each number (no limit)
- ✓ 40% is given back as prizes termly - the more numbers sold the higher the prize money
- ✓ licensed by South Hams Council

FODS WILL BE RUNNING A COMPETITION IN DECEMBER TO SIGN UP MEMBERS MORE TO COME ON THIS SHORTLY



FODS have funded £1500 this school year already - including theatre trips, science workshops and sports equipment

FRIENDS OF DIPTFORD SCHOOL BAGS2SCHOOL FUNDRAISING MONDAY 9TH DECEMBER PLEASE START COLLECTING NOW



HOW DOES IT WORK

Bags2School work across the country, collecting bagged items including unwanted clothing, toys, linen
The School receives a payment based on the weight of the bags collected



HOW YOU CAN HELP

This is open to anyone in our community and is a great way of recycling your unwanted things, whilst supporting Diptford School

ON THE DAY BY 9AM

You can leave your tied up bags (please use ordinary bin liners), in front of School (under the mosaic). They need to be left before 9am

WHERE WILL YOUR ITEMS END UP?

THE CLOTHING WILL MAKE JOURNEYS ALL OVER THE WORLD STARTING THEIR NEW LIFE. THIS CAN BE A PURPOSE BUILT SECOND HAND STORE IN EASTERN EUROPE OR SOUTH AMERICA, OR A MARKET STALL IN EAST OR WEST AFRICA, PROVIDING VALUABLE EMPLOYMENT FOR IMPORTERS, WAREHOUSE STAFF, TRANSPORT COMPANIES AND STALL HOLDERS AS WELL AS AFFORDABLE CLOTHES FOR LOCAL PEOPLE.

WHAT ITEMS CAN YOU DONATE



**CLOTHING
 PAIRED SHOES
 HANDBAGS
 BAGS
 HATS
 SCARVES
 TIES**



**SOFT TOYS
 BED LINEN
 CURTAINS
 BRAS
 JEWELLRY
 TOWELS
 BELTS
 SOCKS**



**PLEASE DO NOT DONATE:
 BOOKS, DUVETS, BLANKETS, SOILED OR RIPPED CLOTHES,
 WORK OR SCHOOL UNIFORMS, CARPETS, RUGS OR MATS,
 BATTERIES**

DIPTFORD PLAYING FIELD / AMENITY TRUST

Diptford Parish Council and the Playing Field Group want to update the community on the progress on the tennis court.

We are so excited to say that we are close to our targets, and hope to be able to refresh the tennis court, and offer more activities by Summer 2025.

We are in the final phase of fundraising but are feeling very hopeful.

We'd also like to thank the Diptford Ladybirds for a lovely Advent Fayre which also raised funds for the Amenity Trust.

Church Services in December

| Date & Liturgical Colour | 01.12.2024 1st Sunday of Advent | 08.12.2024 2nd Sunday of Advent | 14.12.2024 | 15.12.2024 3rd Sunday of Advent | 22.12.2024 4th Sunday of Advent | 24.12.2024 Christmas Eve | 25.12.2024 Christmas Day | 29.12.2024 Christmas 1 |
|--|---|--|---|---|--|---|---|---|
| | Jeremiah 33. 14-16 Ps. 25. 1-9 1 Thessalonians 3. 9- end Luke 21. 25-36 | Malachi 3. 1-4 Benedictus Philippians 1. 3-11 Luke 3. 1-6 | | Zephaniah 3. 14-end Ps. 146. 4-end Philippians 4. 4-7 Luke 3. 7-18 | Micah 5. 2-5a Magnificat or Hebrews 10. 5-10 Luke 1. 39-45 [46-55] | Isaiah 52. 7-10 Ps. 98 Hebrews 1. 1-4 [5-12] John 1. 1-14 | Isaiah 9. 2 - 7 Psalm 96 Titus 2. 11 - 14 Luke 2. 1 - 14 [15 - 20] | 1 Samuel 2. 18-20 & 26 Ps. 148. 7-end Colossians 3.12-17 Luke 2. 41-end |
| Diptford with North Huish | 11am Morning Prayer LWL's 4.30pm Christingle Service | 11am Holy Communion Rev D. Sayle | | 11am Morning Prayer LWL's | 11am Holy Communion Rev D. Sayle 6:30pm Carol Service Rev D. Sayle | 7pm Carols Around the Tree | 11am Christmas Communion Rev D. Sayle | 11am Benefice Holy Communion Rev D. Sayle |
| Ermington | 11am Holy Communion Rev D. Sayle | 11am Morning Service LWL's | | 6.30pm Carol Service Rev D. Sayle | 11am Christingle Service LWL's | Carols in The Square | 11am Christmas Service L.W.L's | As above |
| Ugborough | 9:30am Morning Praise LWL's | 9:30am Holy Communion Rev A. Ryan | 4.30pm Carol Service Rev D. Sayle | 9:30am Morning Praise LWL's | 9:30am Holy Communion Rev David Sayle | 4.30pm Christingle Service Rev D. Sayle & LWL's | 9.30am Christmas Communion Rev D. Sayle & LWL's | As above |
| Halwell | As above | 3.30pm Christingle Service | | As above or below | As above or below | 11.30pm Midnight Communion Rev D. Sayle | As above | As above |
| Moreleigh | As above | As above | | As above or below | 3:30pm Carol Service Rev D. Sayle | As above | As above | As above |
| Harbertonford | As above | As above | | 3.30pm Carol Service Rev D. Sayle | As above | As above | As above | As above |

Business adverts as in Page 11 will be considered by the Editorial Team and are charged at £50 per advert – for 12 issues of the Parish News
If wishing to advertise please contact the Editor Val Haddy
valjohnhaddy@aol.com

Editorial note – The Grumbler is having a bit of fun with us – please read that way!!!



THE DIPTFORD GRUMBLER CHRISTMAS EDITION

As this is the season of goodwill it seems inappropriate, perhaps, to have a moan.

Or perhaps not!

Whilst it is tempting to raise a complaint that Christmas starts a tad too early in the shops, my first sighting this year was 30th August! I shall instead, in the words of Dickens, “keep Christmas in my heart and try to keep it all the year.”

So, whilst endorsing Christmas benevolence, what does the winter also bring that I can have a whine about?

I have two. Number one – mud.

I hate it and it hates me. Go for a walk with friends, they return still sartorially elegant, on a good day I look like I have fallen in a ditch. Or on a bad day as if I came last in a commando assault course. The mud shoots up the back of my legs if defies gravity by leaping from the ground and smearing itself on any clean area of my clothing. It gets in my hair; it slips and slides down my neck. My hands look as though I bought a brown pair of gloves with a “wet” look. My shoes steadily increase in size, so it looks like I have a couple of giant chocolate footballs on my feet. To camouflage the situation, and my embarrassment, I now order winter clothing with the colour description of “sludge” or “slimy” or “mucky.”

Number two - expert quiz participants, you know the ones, the know-it-all teams. The ones whose players spend their spare time playing solitaire Trivial Pursuit. Not only do they know the year Shackleton reached the South Pole, they can tell you the actual day, what time it was, what the explorers had for breakfast, what phase of the moon it was, the names of the huskies, the size of the flag, and the exact time it took to reach their destination to the nearest hundredth of a second.

I hate their smugness, the “well I am astonished you didn’t know that” look. The fake surprise “Oh! We have won again!” “We were really lucky with the questions, this year.” No, you spent hours and hours and hours reading and memorizing useless information, just so you could annoy me. Well, you certainly succeeded, and you have won the quiz for another year, good for you!

Wishing you an incredibly happy Christmas – The Diptford Grumbler

CPR and Defibrillator training - Diptford Parish Hall - 7th November



No one wants to find themselves in the situation where they have to administer CPR or need to use a defibrillator but it would be even worse to be with someone in cardiac arrest and not know what to do. For that reason Sue and I went down to the Village Hall on 7th November for a training session given by Paul a responder from The Air Ambulance Service.

Paul went through the Cardiopulmonary Resuscitation process and we all had the opportunity to have practical sessions on dummies on how you can literally save a life with your own hands.

Paul was able to put our minds at rest that you cannot make matters worse for the patient by using CPR. You may break a rib or 2 by pushing hard on the chest as you need to, but a person in cardiac arrest is effectively clinically dead. How could it be worse ?

Diptford is fortunate enough to have it's own Defibrillator outside the school, but I would have had no idea on how to use it before today. There is also one at Curtisknowle.

It was reassuring to know that the Emergency Service and the defib machine itself will talk you through what could be a very stressful time for you especially if you are on your own.

You won't be surprised to know that there is a web site that will inform you of the nearest defibrillator to your current location so it's a good idea to add it onto your smart phone if you have one. - www.defibfinder.uk

All in all, it was a very informative couple of hours so thank you to Ali Kohler, Diptford's Parish Clerk, for organising and to Paul from the Air Ambulance.

Steve Hemmings
Mow Cottage

WINTER WARMER MULLED WINE

It's Chriiiiistmas - and that calls for a drink. You can't beat a mulled wine at Christmas and this one is a cracker.

1. Peel large sections from the clementines, lemon and lime using a speed-peeler.
2. Put the sugar in a large saucepan over a medium heat, add the pieces of peel and squeeze in the clementine juice.
3. Add the cloves, cinnamon stick, bay leaves and about 10 to 12 gratings of nutmeg. Halve the vanilla pod lengthways and add to the pan, then stir in just enough red wine to cover the sugar.
4. Let this simmer until the sugar has completely dissolved into the red wine, then bring to the boil. Keep on a rolling boil for about 4 to 5 minutes, or until you've got a beautiful thick syrup. The reason for doing this first is to create a wonderful flavour base by really getting the sugar and spices to infuse and blend well with the wine. It's important to make a syrup base first because it needs to be quite hot, and if you do this with both bottles of wine in there you'll burn off the alcohol.

When your syrup is ready, turn the heat down to low and add your star anise and the rest of the wine. Gently heat the wine and after around 5 minutes, when it's warm and delicious, ladle it into heatproof glasses and serve. Cheers!

TOTNES TV & ELECTRICAL

Established 1992
 APPLIANCE REPAIRS . AERIAL INSTALLATION
 ELECTRICAL CONTRACTING . PART 'P'
 REGISTERED
 TESTING & INSPECTIONS . CERTIFICATION .
 P.A.T. TESTING
ANDY GARNER / CHRIS HATCH



103d High Street, Totnes Devon TQ9 5SN
 Domestic Installer

Tel: (01803) 867298 **EIC NIC**

stanboroughpoultry
 TURKEYS · GEESE · DUCKS · CHICKEN

Contact us to order your free-range,
 oven-ready Christmas bird:
 Give us a call or send us a message
 on:
01548 821306 or 07398901768
 E-mail:
stanboroughfarm@hotmail.com

**Veg Boxes are also available to order
 and collect with your bird, from our pop-
 up farm shop**

Find and Follow us on Social Media:
 Stanborough Farm Poultry and Firewood
 stanboroughpoultry

Ian Kirton Plumbing & Heating



077100 94424 01548 821 847
inkirton@btinternet.com

OFTEC registered
 for service and installation of oil appliances
 General plumbing, heating systems and
 bathrooms
 Any plumbing jobs considered

SEASONED LOGS FOR SALE

Available in nets or dumpy bags

£5/ net or £110/ dumpy bag

Free delivery to Diptford

Call Graham on 07813 169035

hmad architects



Experienced, friendly RIBA Chartered Architectural
 Practice, working across the South West.

Specialising in the adaptive reuse of listed buildings,
 residential extensions and renovations.

Call Luke McAdam for a chat about your project, and to
 see how we can help: 01392 459777.

mail@hmad.co.uk www.hmad.co.uk

SOCIAL MEDIA IN THE VILLAGE

We have our Village Website

www.diptfordvillage.co.uk

Parish Council website

www.diptfordparishcouncil.org

Village Hall Bookings

www.diptfordparishhall.org.uk

Facebook

Diptford Sustainable Community

WhatsApp

Diptford Support Network

COMMUNITY INFORMATION

DIPTFORD PARISH HALL

BOOKING ARRANGEMENTS

TO MAKE A BOOKING FOR DIPTFORD PARISH HALL

Diptford Parish Hall has launched a website!

www.diptfordparishhall.org.uk

It is brand new & will we expect have a few teething problems, but I would encourage you to take a look & take advantage of the online Calendar & Booking System.

Also, there is a facility to 'Add an Entry' if your group /organisation would like to add any local events or organisations.

Please feel free to share this amongst your groups & friends.

I hope you find the website useful & helpful in your interactions with the Hall.

Feedback welcomed.

Steve.

Chair of Trustees Diptford Parish Hall.

DiptfordPH@yahoo.com 07944 098174

COMMUNITY NOTICEBOARD

THE NOTICE BOARD IN THE SQUARE IS FOR COMMUNITY NOTICES ONLY

NO COMMERCIAL ADVERTISING WILL BE ALLOWED

WE WOULD ASK ALL ORGANISATIONS NOT TO 'HOG' THE SPACE AVAILABLE

This additional facility has been installed by Diptford Parish Council
with funding from our County and District Councillors

There is a combination lock – details of which have been given to voluntary organisations within the village

Diptford Parish Lands Eleemosynary Charity

An independent charity

Do you know that there are funds available for people living in the parish of Diptford to access in times of need?

Confidentiality Guaranteed

Contact: Reverend David Sayle at parish_sayle@me.com

HIGHWAYS CONTACTS

To report any Highways problem, either report direct on Devon County Council website – devon.gov.uk (Report a Problem) or telephone the Call centre on 0345 155 1004

This applies to faulty streetlights, potholes and problems of visibility though landowners are encouraged to keep road signs on their land clearly visible and to cut roadside hedges on an annual basis out of the nesting season. There are exemptions from the timing if there are road safety issues.

Editor : Mrs Val Haddy, School House, Diptford Tel: 01548 821418

**PLEASE NOTE THAT all copy MUST be received before
the 25th of the preceding month**

Contributions may be submitted by e-mail to valjohnhaddy@aol.com

Contributions subject to change due to availability of space

Diptford & North Huish Parish News is published monthly by Diptford Parochial Church Council. Every care is taken in compiling the Parish News and no responsibility can be taken for any action arising from information given therein. All information is believed to be correct at the time of publication.